



HSM 405H

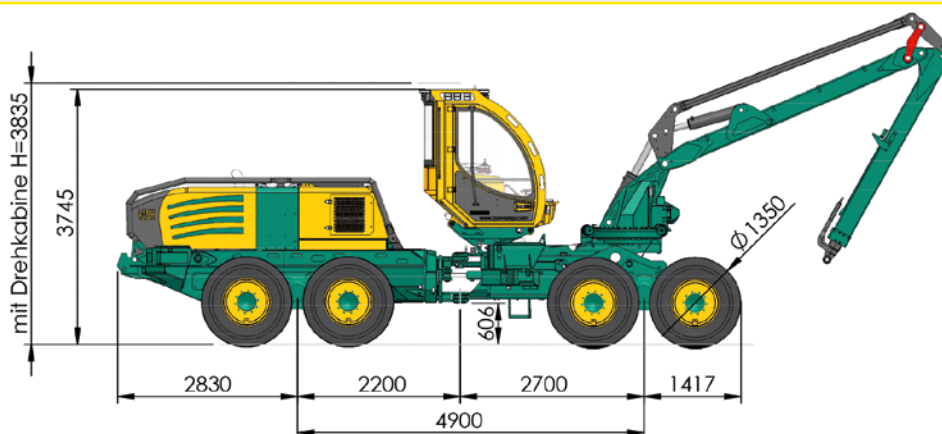


Harvester



Technik die Freude macht.

405H2 8WD



Engine (6 cylinders):

- VOLVO PENTA
TAD882VE EU Stage V
- Power: 210 kW (286 HP) at 1700 rpm
- max. revolution: 1225 Nm at 1100 - 1600 rpm
- max. torque: 1255 Nm at 1400 rpm
- Displacement: 7,7 liter

Transmission:

- Hydrostatic-mechanical
- NAF 2-speed transfer gearbox

Axles:

- NAF balanced portal tandem axles
- At the front: 100 % selectable differential lock
- At the rear: 100 % selectable differential lock

Brake:

- 2-circuit brake, disk brakes running in an oil bath
- Spring-loaded parking brake

Steering:

- Articulated steering with 2 cylinders
- 2 steering cylinders, 50° steering angle

Tyres:

	Size:	Total width
• Serial:	710/45-26,5	2880 mm Tapes and chains
• Optional:	800/40-26,5	2980 mm only tapes
	600/55-26,5	3060 mm Tapes and chains
		2660 mm Tapes and chains

Tank capacity:

- Diesel: 500 l
- AdBlue: 45 l
- Hydraulic liquid: 250 l

Hydraulics:

- Load sensing
- Variable pump: Crane pump: 190 cm³
Head pump: 190 cm³
Flow rate: 532 l/min at 1400 rpm
Pressure: up to 380 bar
- Hydraulic liquid: Saturated, synthetic ester
Panolin HLP SYNTH with Kleenoil
Microfiltration; WGK 1

Cabin:

- Height-adjustable at the front / rear +11° / -11° (restricted to -26°)
- Bent Lexan windscreen
- Windscreen wipers in the front and at the side
- ROPS, FOPS, OPS tested safety cab
- Air cushioned seat with seat heating
- Hot water heating
- Auxiliary heating with cooling water and hydraulic oil preheating
- Air conditioner
- Optional height-adjustable and rotatable (270°), front / rear +11° / -13°, lateral +/- 9°
- Optional: Sun blinds

Electrical system / Instruments:

- HSM Ecomand colour-display
- 5 operator programs + factory setting
- Diagnosis-tool and error-indication
- Graphic support at parameter editing
- Generator 110 A (28 A)
- 2 service-free dry batteries á 75 Ah

Weight:

- from 25400 kg

Torsion lock:

- 2 hydraulic cylinders

Crane:

- Mesera M221 H100

Range:	10 m
Gross lifting moment:	188 kNm
Pivoting moment:	43,6 kNm
Pivot angle:	260°
Tilt angle:	+24°/-30°

Optional:

- Mesera M240 H103

Range:	10,3 m
Gross lifting moment:	240 kNm
Pivoting moment:	54 kNm
Pivot angle:	260°
Tilt angle:	+24°/-30°

Aggregate:

- Logmax 4000B with Super Cut

Falling diameter:	500 mm
Delimiting diameter:	355 mm
Max. feed force:	19,5 kN
Max. feed force speed:	4.3 m/s
Max. operating pressure:	250 bar
Weight:	653 kg
Control:	DASA
- Other aggregates on request

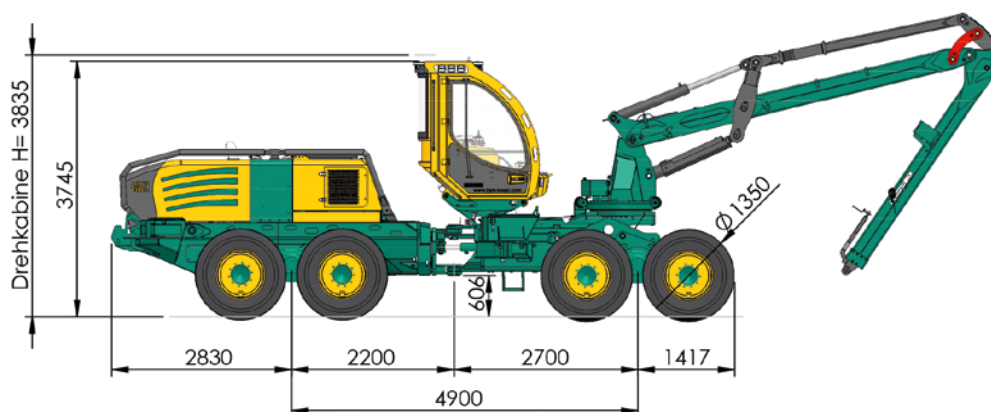
Standard equipment:

- 20 LED work lights on the cab, 4 work lights in front of the crane, 2 LED work lights on the crane column, 2 LED work lights on the rear frame, bogie lift front separately switchable, voltage converter on-board voltage 24 V to 12 V, end cushioning for crane and steering cylinder, radio, fire extinguisher, first-aid kit, warning triangle, tool set, bypass filter, Diesel fill pump, hydraulic fill pump, vacuum pump

Special equipment:

- GPS system
- Data transfer
- Bogielift engine carriage
- Attachement steep slope winch, traction constant 120 kN, max. 150 kN
- Air compressor 24 V
- Guard bracket bonnet

405H3 8WD



Engine (6 cylinders):

- VOLVO PENTA
TAD882VE EU Stage V
Power: 210 kW (286 HP) at 1700 rpm
max. revolution: 1225 Nm at 1100 - 1600 rpm
max. torque: 1255 Nm at 1400 rpm
Displacement: 7,7 liter

Option:

- VOLVO PENTA
TAD884VE EU Stage V
Power: 250 kW (340 HP) at 1800 rpm
max. revolution: 1330 Nm at 1200 - 1800 rpm
max. torque: 1360 Nm at 1400 rpm
Displacement: 7,7 liter

Transmission:

- Hydrostatic-mechanical
- NAF 2-speed transfer gearbox

Axles:

- NAF balanced portal tandem axles
- At the front: 100 % selectable differential lock
- At the rear: 100 % selectable differential lock

Brake:

- 2-circuit brake, disk brakes running in an oil bath
- Spring-loaded parking brake

Steering:

- Articulated steering with 2 cylinders
- 2 steering cylinders, 50° steering angle

Tyres:

- | | Size: | Total width |
|-------------|-------------|--|
| • Serial: | 710/45-26,5 | 2880 mm Tapes and chains |
| • Optional: | 800/40-26,5 | 2980 mm only tapes
3060 mm Tapes and chains |
| | 600/55-26,5 | 2660 mm Tapes and chains |

Tank capacity:

- Diesel: 500 l
- AdBlue: 45 l
- Hydraulic liquid: 250 l

Hydraulics:

- Load sensing
- Variable pump:

Crane pump:	190 cm ³
Head pump:	190 cm ³
Flow rate:	532 l/min at 1400 rpm
Pressure:	up to 380 bar
- Hydraulic liquid: Saturated, synthetic ester
Panolin HLP SYNTH with Kleenoil
Microfiltration; WGK 1

Cabin:

- Height-adjustable at the front / rear +11° / -11° (restricted to -26°)
- Bent Lexan windscreen
- Windscreen wipers in the front and at the side
- ROPS, FOPS, OPS tested
- Tested safety cab
- Air cushioned seat with seat heating
- Hot water heating
- Auxiliary heating with cooling water and hydraulic oil preheating
- Air conditioner
- Height-adjustable and rotatable (270°), front / rear +11° / -13°, lateral +/- 9°
- Optional: Sun blinds

Electrical system / Instruments:

- HSM Ecomand colour-display
- 5 operator programs + factory setting
- Diagnosis-tool and error-indication
- Graphic support at parameter editing
- Generator 110 A (28 A)
- 2 service-free dry batteries á 75 Ah

Weight:

- from 26200 kg

Torsion lock:

- 2 hydraulic cylinders

Crane:

- Mesera M280 V110

Range:	11 m
Gross lifting moment:	280 kNm
Pivoting moment:	65 kNm
Pivot angle:	260°
Tilt angle:	+24°/-30°

Aggregate:

- Logmax 6000

Felling diameter:	650 mm
Delimiting diameter:	500 mm
Gross lifting moment:	26.9 kN
Max. feed force speed:	5.2 m/s
Max. operating pressure:	280 bar
- Control: DASA
- Other aggregates on request

Standard equipment:

- 20 LED work lights on the cab, 4 work lights in front of the crane, 2 LED work lights on the crane column, 2 LED work lights on the rear frame, bogie lift front separately switchable, voltage converter on-board voltage 24 V to 12 V, end cushioning for crane and steering cylinder, radio, fire extinguisher, first-aid kit, warning triangle, tool set, bypass filter, Diesel fill pump, hydraulic fill pump, vacuum pump

Special equipment:

- Special accessories - see models 405H2 8WD and 405H4 8WD

405H4 8WD

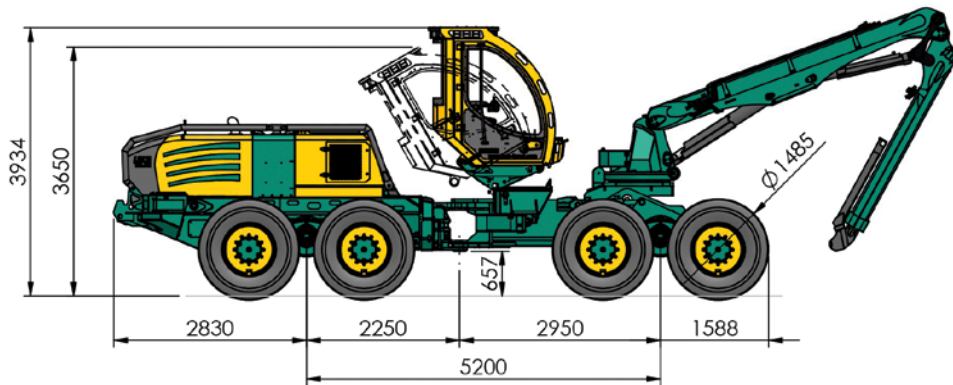


Fig. with Epsilon X270 H107 crane

Engine (6 cylinders):

- VOLVO PENTA
TAD884VE EU Stage V
- Power: 250 kW (340 HP) at 1800 rpm
- max. revolution: 1330 Nm at 1200 - 1800 rpm
- max. torque: 1360 Nm at 1400 rpm
- Displacement: 7,7 liter

Transmission:

- Hydrostatic-mechanical
- NAF 2-speed transfer gearbox

Axles:

- NAF balanced portal tandem axles
- At the front: 100 % selectable differential lock
- At the rear: 100 % selectable differential lock

Brake:

- 2-circuit brake, disk brakes running in an oil bath
- Spring-loaded parking brake

Steering:

- Articulated steering with 2 cylinders
- 2 steering cylinders, 50° steering angle

Tyres:

- | | Size: | Total width |
|-------------|--------------|--------------------------|
| • Serial: | 750/55-R26,5 | starting at 2900 mm |
| | | 3000 mm Tapes and chains |
| • Optional: | 650/55-R26,5 | 2900 mm Tapes and chains |

Tank capacity:

- Diesel: 500 l
- AdBlue: 45 l
- Hydraulic liquid: 250 l

Hydraulics:

- Load sensing
- Variable pump:

Crane pump:	190 cm ³
Head pump:	190 cm ³
Flow rate:	532 l/min at 1400 rpm
Pressure:	up to 380 bar
- Hydraulic liquid: Saturated, synthetic ester
Panolin HLP SYNTH with Kleenoil
Microfiltration; WGK 1

Cabin:

- Height-adjustable at the front / rear +15° / -30°
- Bent Lexan windscreen
- Windscreen wipers in the front and at the side
- ROPS, FOPS, OPS tested
- Tested safety cab
- Air cushioned seat with seat heating
- Hot water heating
- Auxiliary heating with cooling water and hydraulic oil preheating
- Air conditioner
- Height-adjustable and rotatable (270°), front / rear +11° / -13°, lateral +/- 9°
- Optional: Sun blinds

Electrical system / Instruments:

- HSM Ecomand colour-display
- 5 operator programs + factory setting
- Diagnosis-tool and error-indication
- Graphic support at parameter editing
- Generator 110 A (28 A)
- 2 service-free dry batteries á 75 Ah

Weight:

- from 29200 kg

Torsion lock:

- 2 hydraulic cylinders

Crane:

- Mesera M280 V110

Range:	11 m
Gross lifting moment:	280 kNm
Pivoting moment:	65 kNm
Pivot angle:	260°
Tilt angle:	+24°/-30°
- Optional:
 - Epsilon X270 H107

Range:	10.9 m
Gross lifting moment:	360 kNm
Pivoting moment:	92 kNm
Pivot angle:	260°
Tilt angle:	+24°/-30°

Aggregate:

- Logmax 6000

Felling diameter:	650 mm
Delimiting diameter:	500 mm
Gross lifting moment:	26.9 kN
Max. feed force speed:	5.2 m/s
Max. operating pressure:	280 bar
- Control: DASA
- Other aggregates on request

Standard equipment:

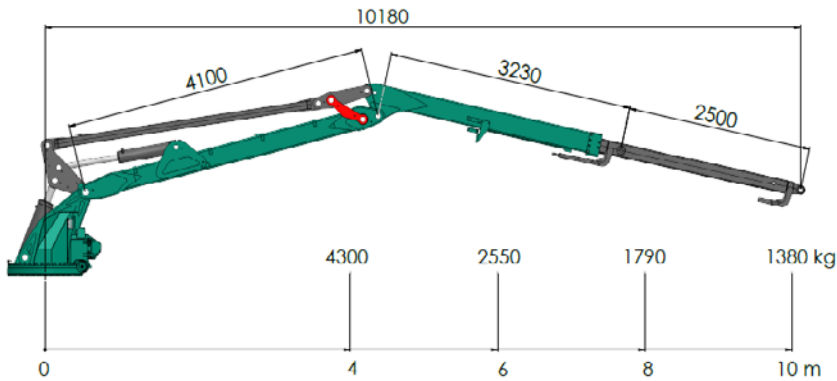
- 20 LED work lights on the cab, 4 work lights in front of the crane, 2 LED work lights on the crane column, 2 LED work lights on the rear frame, bogie lift front separately switchable, voltage converter on-board voltage 24 V to 12 V, end cushioning for crane and steering cylinder, radio, fire extinguisher, first-aid kit, warning triangle, tool set, bypass filter, Diesel fill pump, hydraulic fill pump, vacuum pump

Special equipment:

- GPS system
- Data transfer
- Bogielift engine carriage
- Attachement steep slope winch, traction constant 120 kN, max. 150 kN
- Air compressor 24 V
- Guard bracket bonnet

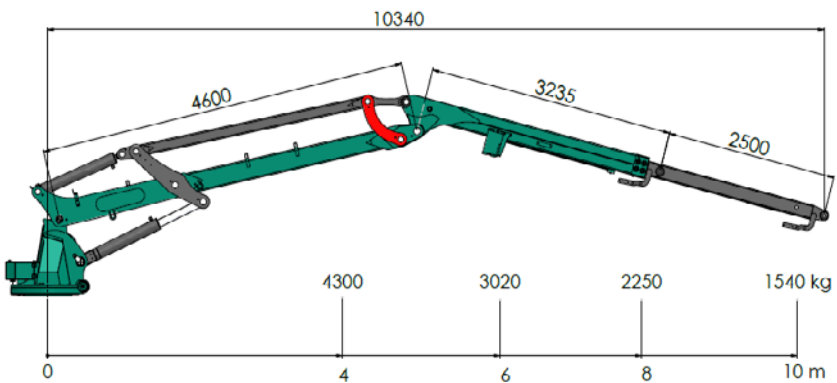
HSM Crane-list

Crane M221 H100:



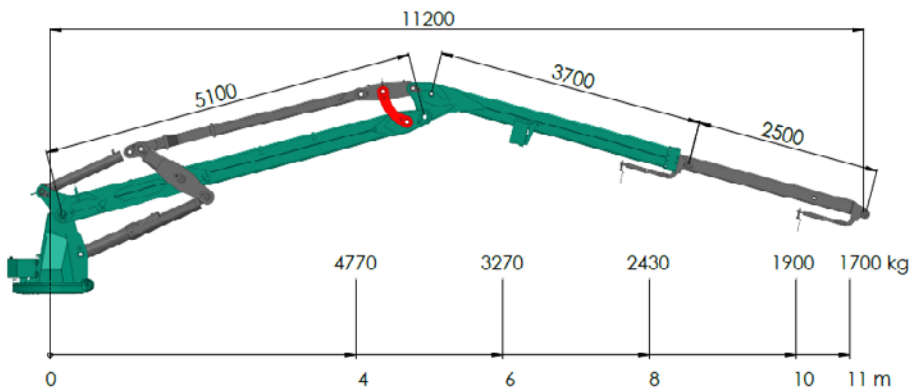
Lifting moment brutto	188 kNm
Swivering moment	43,6 kNm
Swivel angle	260°

Crane M240 H103:



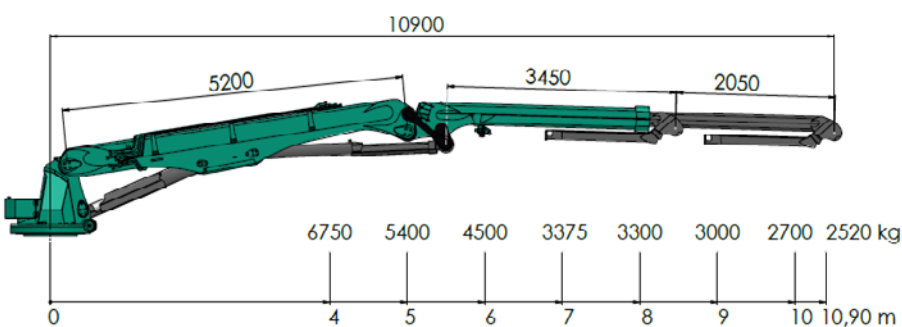
Lifting moment brutto	240 kNm
Swivering moment	54 kNm
Swivel angle	260°

Crane M280 V110:



Lifting moment brutto	280 kNm
Swivering moment	65 kNm
Swivel angle	260°

Crane X270 H107:



Lifting moment net	270 kNm
Swivering moment	92 kNm
Swivel angle	260°

HSM 405H



**HSM Hohenloher Spezial-
Maschinenbau GmbH & Co. KG**

Technik die Freude macht.

D-74635 Neu-Kupfer
Im Greut 10
Phone + 49 (0) 7944 / 9191-0
Fax + 49 (0) 7944 / 9191-77
Mail: info@hsm-forest.com
www.hsm-forest.com

